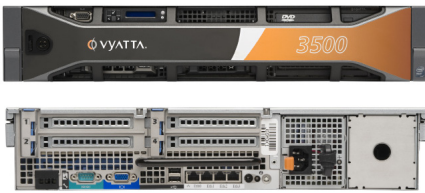




# Vyatta 3500 Series Appliances



## Vyatta 3500 Series Highlights

- » up to 8 x 10 GbE ports
- » up to 20 x 1 GbE ports
- » 2Mpps - 3Mpps throughput
- » up to 8000+ IPsec VPN tunnels
- » Vyatta Support & Subscription Services
- » Integrated Vyatta Network OS

## Vyatta 3500 Subscription Options

### BASIC SUBSCRIPTIONS

#### SERVICE

- » Online Support Portal Tools
- » Expert Documentation
- » Online Knowledge Base
- » No Technical Support

#### HARDWARE

- » E-mail Hardware Diagnostics
- » One Year Hardware Warranty

### ENTERPRISE SUBSCRIPTIONS

#### SERVICE

##### Basic Features Plus

- » 5 X 12 Vyatta Technical Support
- » Case SLA - Severity Based
- » Vyatta University Online Training

#### HARDWARE

- » Warranty for Subscription Duration
- » Next Business Day Unit Replacement\*

### PREMIUM SUBSCRIPTIONS

#### SERVICE

##### Enterprise Features Plus

- » 7 X 24 Technical Support (Emergency)
- » Case SLA - Priority Response

#### HARDWARE

- » Warranty for Subscription Duration
- » NBD and 4Hr Field Service Options\*

\* Next Business Day Replacement is Best Effort, 4Hr Field Service Not Available in all Locations Worldwide

The Vyatta 3500 Series appliances combine the award winning Vyatta Network OS with high-performance hardware to deliver industry-leading price/performance for enterprise and service provider deployments requiring up to 10Gbps routing and security.

Designed to address the performance and availability requirements of large networks, the Vyatta 3500 series supports a complete set of features and applications required to connect, protect and optimize your network. From enterprise and service provider WAN routing and security to high-performance firewall, VPN and intrusion protection at the branch or datacenter, the 3500 series offers a flexible, scalable appliance-based open networking solutions.

The Vyatta 3500 series are compact 2U, energy efficient appliances that offer redundancy via hot swap power supplies, integrated software RAID and hot swap disk drives to ensure maximum reliability and uptime. The appliances also include four onboard Gigabit Ethernet ports and 4PCI Express expansion slots to support up to 20 x 1 GbE ports or 8 x 10 GbE ports.

Vyatta appliances include access to Vyatta subscription services, Vyatta technical support and are eligible for additional Vyatta professional services to help customers simplify design, installation, configuration and management.

Specification	Model 3510	Model 3520
<b>Performance</b>		
Layer 3 Forwarding	2,000,000 PPS *	3,000,000 PPS *
VPN Forwarding	700 Mbps	900 Mbps
Max IPsec VPN Tunnels	6000	8000
<b>Network Connectivity</b>		
Onboard I/O	4x 10/100/1000	
Expansion Slots	2 Gen-2 PCI Express x8 slots 1 full height Gen-2 PCI Express x4 slot 1 low profile Gen-2 PCI Express x4 slot	
Ethernet Expansion	up to 16 additional 10/100/1000 or up to 8 x 10GbE	
Serial Expansion	1,2,4 port T1/E1 and Synchronous Serial V.35, X.21, RS422/EIA530X	
<b>Certified LAN / WAN Interfaces (available from Vyatta)</b>		
Gigabit Ethernet	<b>Network Interface Cards</b>	
	2, 4, 6 port RJ45 2, 4, 6 port SFP	<b>Transceivers</b> 1000BASE-T 100m 1000BASE-SX (850nm, 550km over MMF) 1000BASE-LX (1310nm, 10km over SMF), ZX(1550nm, 80km over SMF)
10 Gigabit Ethernet	4 port 10GbE SFP + 6 port 10GbE SFP +	10GBase-SR - 850nm, 300m over MMF 10GBase-LR - 850nm, 10km over SMF 10GBase-LR2 - 850nm, 40km over SMF
WAN	1-port, 2-port & 4 port T1/E1	
Synchronous Serial	2 & 4 port V.35, X.21, RS422/EIA530X PCIE Cards	
<b>Storage and System Memory</b>		
Storage	2 x 250GB SATA w/ RAID-1	
Memory	2 GB expandable to 192GB	3GB expandable to 192GB
<b>Physical System &amp; Environmentals</b>		
Dimensions	(WxHxD) 19 x 3.4 x 28.4 in (48.2 x 8.6 x 72.1 cm)	
Weight	57.54lb (26.1kg) max config	
Form Factor	2U rack height	
Power Supply	Energy Smart- Single hot plug high efficient 570w PSU - Redundant power supply available	

\* Forwarding performance numbers are tested at 64-byte frame size

# Vyatta Network OS

## Network Connectivity:

At the core of the Vyatta system is a complex routing engine with full support of IPv4 and IPv6 dynamic routing protocols (BGP, OSPF, RIP). Vyatta systems include support for 802.11 wireless, Serial WAN Interfaces and a wide variety of 10/100 thru 10Gb Ethernet NICs.

## Firewall Protection:

The Vyatta firewall features IPv4/IPv6 stateful packet inspection to intercept and inspect network activity and protect your critical data. Vyatta advanced firewall capabilities include stateful failover, zone and time-based firewalling, P2P filtering and more.

## Content and Threat Protection

Vyatta systems offer an additional level of proactive threat protection with integrated secure web filtering and advanced intrusion prevention rules available as subscription-based Vyatta PLUS services.

## Secure Connectivity

Establish secure site-to-site VPN tunnels with standards-based IPsec VPN between two or more Vyatta systems or any IPsec VPN device. Or provide secure network access to remote users via Vyatta's SSL-based OpenVPN functionality.

## Traffic Management

The Vyatta system provides a wide variety of QoS queuing mechanisms that can be applied to inbound traffic and outbound traffic for identifying and prioritizing applications and traffic flows.

## High Availability

Mission critical networks can deploy Vyatta with the confidence that high availability and system redundancy can be achieved through a number of industry standard failover and synchronization mechanisms.

## IPv6 Compatibility

Vyatta Subscription Edition software is the only software-based routing and security solution with proven IPv6 functionality and interoperability, ensuring a future-proof investment in a solution that offers a simplified migration path from IPv4 to IPv6.

## Administration & Authentication:

Vyatta systems can be managed through our familiar network-centric command line interface, web-based GUI or through external management systems using Vyatta's Remote Access API. All network management sessions can be securely managed using SSHv2, RADIUS or TACACS+.

## Monitoring and Reporting:

Vyatta systems present complete logging and diagnostics information that can be monitored using in industry standard toolsets such as SNMP, Netflow, Syslog, Wireshark and more.

## Vyatta Network OS Version 6.3

IPv4 / IPv6 Routing	» BGPv4, BGPv6 » OSPFv2	» RIPv2 » Static Routes	» IPv6 Policy » IPv6 SLAAC
IP Address Management	» Static » DHCP Server » DHCP Client	» DHCP Relay » Dynamic DNS » DNS Forwarding	» IPv6 DNS Resolver » IDHCPv6 Server, Client » DHCPv6 Relay
Encapsulations	» Ethernet » 802.1Q VLANs » PPP	» PPPoE » IP in IP » Frame Relay	» MLPPP » HDLC » GRE
Firewall	» Stateful Inspection Firewall » Zone-based Firewall » P2P Filtering	» IPv6 Firewalling » Time-based Firewall Rules » Rate Limiting	» ICMP Type Filtering » Stateful Failover
Tunneling / VPN	» SSL-based OpenVPN » Site to Site VPN (IPSec) » Remote VPN (PPTP, L2TP, IPSec)	» OpenVPN Client Auto-Configuration » Layer 2 Bridging over GRE » Layer 2 Bridging over OpenVPN	» OpenVPN Dynamic Client
Additional Security	» Network Address Translation » Sourcefire VRT Intrusion Prevention » VyattaGuard Web Filtering	» 3DES, AES Encryption » MD5 and SHA-1 Authentication » RSA, Diffie Helman Key Mgmt	» NAT Traversal » Role based access control
WAN / LAN Device Drivers	» WAN Device Drivers - T1/E1 » Intel 10/100Mbps - 10Gbps » Broadcom 10/100Mbps - 10Gbps	» IEEE 802.11 wireless » Drivers in 2.6.31 Linux Kernel	» Synchronous Serial » - V.35, X.21, RS-422, EIA530
Performance Optimization	» WAN Link Load Balancing » Ethernet Link Bonding » Web Caching	» MLPPP » ECMP » Bandwidth Management	
QoS Policies	» Priority Queuing » Network Emulator » Round Robin	» Random / Weighted Random » Classful Queuing » Ethernet Header Matching	» VLAN Tag » IPv6 Address » Port Mirroring
High Availability	» Stateful Firewall / NAT Failover » VRRP » HA Clustering	» Configuration Replication » RAID 1	» IPsec VPN Clustering » Protocol Fault Isolation
Administration & Authentication	» Integrated CLI » Web GUI » Vyatta Remote Access API	» Telnet » SSHv2 / SSH Public Key » Binary Image Install	» RADIUS » TACACS+ » X.509 digital certificate auth. » Single Configuration File
Diagnostics & Logging	» tcpdump » Wireshark Packet Capture » BGP MD5 Support	» Serial Loopback Commands » Netflow / sFlow » LLDP	» Syslog » SNMPv2c » SNMP for IPv6